

TANK MOUNTS: AN EASY WAY TO ADD MORE CAPACITY & INCREASE FIELD TIME

Caterpillar MT 700- 800 Series



- 210 gallon inside mount tanks (per side)
- Minimum ground clearance - 24"
- No Field modification required for mounting brackets
- 3 Years warranty for tanks

John Deere 8000 Series



- 1000 Gallon Hi-Clearance Side Mounts
- All metal components are powder coated
- Heavy 8" square saddle support tube, 1/2" thick wall
- Centered mounting conversion for saddle
- Adequate clearance under tank for plumbing and fittings
- Excellent cab visibility

Case IH Magnum, Magnum MX Series



- 300 & 400 gallon tanks available
- High clearance design for growing crop application
- Parallel mounting for good visibility
- Side mounts & front mounts may be used where front duals are used
- Ease of mounting
- All fabricated steel components are painted with a powder coated process
- Elliptical tanks available for certain front mounts

Ford/New Holland Genesis



- 200, 260, 300, 400 gallon tanks
- Hi-Clearance design for growing crop application
- Parallel tank mount for greater visibility
- Hi-Density tanks are standard. Each has 1 1/4" & 3/4" outlet & return.
- Limited three year warranty

John Deere 8000T Wide-Trac



- 450 gallon capacity
- Does not interfere with row visibility
- Maintains good weight balance
- Heavy density tanks feature large access cap at top, bottom end fittings, and 25 gallon capacity increment marks.

Check out our website for other models @ www.nessainc.com

John Deere 8000T -400

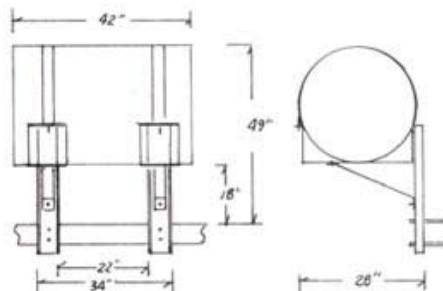


- 400 gallon capacity
- Tracs must be set 120" w/16", 18" or 24" tracs
- Tanks are mounted above axle for max. clearance
- Tanks remain inside tracs
- Hardware includes brackets to move step.

Agri-Products inc.



- Tank mounts available for tractors with front duals



Add Liquid Applications to Your Tool Bar

- 110 or 150 gallon capacity
- Bolts to 4x4 or 7x7 bar
- Heavy duty channel frame
- 18" tool bar clearance
- Heavy nylon tank straps
- Foam tank pads
- 12 gal. saddles