



S N O W R E M O V A L

RDX-117 • SDX-117 • RDX-102 • SDX-102 • SDX-840 • SBX-87 • SBX-75
SV-10 • SV-12 • SV-14



World Class *Built to Last*

schulte.ca

RDX-117 / SDX-117 Snow Blower

117" Wide, 38" Five Paddle Fan Snow Blowing Performance

Schulte's SDX-117 / RDX-117 Snow Blowers incorporate a 38" five-paddle open center cupped style fan which improves performance and is larger than most competitive designs on the market.

A 1000rpm gear driven drive system is standard. The fan is held in place by a 2" tapered splined shaft. A size 8 Bondioli power shaft is included with shear pin protection to power the blower. A Bondioli Italian made one piece gearbox drives this unit.

A heavily reinforced 23" bottom auger with formed struts ensures that hard chunks of snow and ice are fed into the fan with ease. This large open bottom auger also allows the snow blower to cut into hard pack snow where other snow blowers have difficulty.

A 300° rotating chute design includes a UHMW bearing area to reduce freeze up of the chute. The new double deflector design reduces blowback when the chute deflector is placed in the down position.

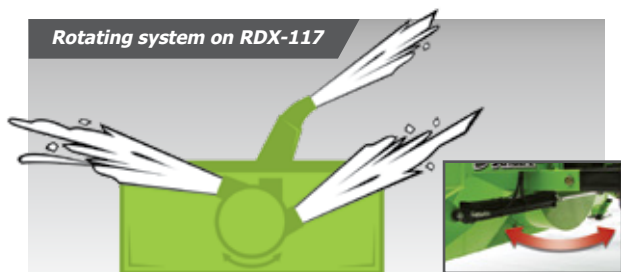
Optional gauge wheels with tapered roller bearings are available for highway or pavement use only.

A hydraulic cylinder for adjusting the chute deflector is standard.

Three position adjustable stake arms.

Three gear parallel reducer box input shaft can be relocated to accommodate non-conventional PTO rotation shear bolt protection for the fan and cross auger.

A hydraulically operated rotating fan housing on the RDX-117 allows snow to be ejected out the left or right side of the fan housing. Delivering snow directly out off the fan blades aids in moving heavy wet snow and is more efficient when using in open areas. The center chute can be used to cast snow directionally as needed in confined areas.



Rotation angles of 25° to left, through center chute or 52° to right



With truck loading folding chute / standard truck loading chute



Double chute deflector



Adjustable skid shoes



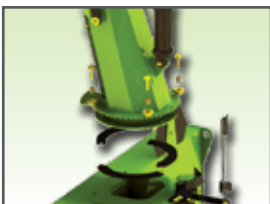
Enclosed chain case



Hydraulic chute rotator



High grade steel cutting blade



Hydraulic chute rotator



High molecular UHMW bearing



Combine with FM-350

RDX-102 / SDX-102 Snow Blower

A Perfect Tool for Any of Your Snow Blowing Needs

The 102" (260cm) wide cut and efficient twin stage design are ideally suited to 85-140hp tractors.

In heavy wet snow, blowing capacity of the RDX-102 is greatly increased due to the fact the snow can be discharged directly off the fan paddles versus all the way up through the center chute.

Highly efficient 30" four-paddle fan with an open center and cupped blades results in improved throwing distance.

A heavily reinforced auger feeds snow to the fan and ensures that chunks of ice and hard packed snow are broken up before being discharged.

A replaceable cutting blade and replaceable adjustable skid shoes are standard on all models.

The heavy duty gearbox with 1 5/8" splined shafts provides positive power delivery to the fan.

UHMW bearing and bronze bushings in the rollers allow for reduced freeze-up on chute.

Enclosed chain case protects the drive chain from debris.



23" open auger design cuts into hard packed snow with ease



Replaceable cutting blade - High strength 450 BHN steel drum



With truck loading folding chute / standard truck loading chute



Easy Access Enclosed Chain Case



Cylinder which rotates drum on RDX-102



SDX-840 Snow Blower

Unmatched Versatility & Value in a Quality Built Package



The SDX-840 features a 84" wide cut and efficient twin stage design, ideally suited to 55-85 HP tractors.

Highly efficient 30" four-paddle fan on the SDX-102, and 26" four-paddle fan on the SDX-840, with an open center and cupped blades results in improved throwing distance.

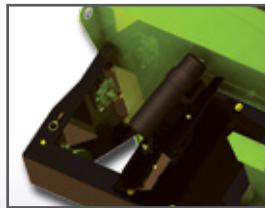
Heavily reinforced auger feeds snow to the fan and ensures that chunks of ice and hard packed snow are broken up before being discharged.

A replaceable cutting blade and replaceable adjustable skid shoes are standard on all models.

A heavy duty gearbox with 1 5/8" splined shafts provides positive power delivery to the fan.

A 300° rotating chute design includes a UHMW bearing area to reduce freeze up of the chute.

A gear driven 300 degree hydraulic chute rotator comes standard



Idler sprocket



Replaceable cutting blade



Adjustable skid shoes



Schulte's Compact Snow Blower Models, Continued Reliability

The all new 75"(191cm) Schulte SBX-75 snow blower and the 87"(221cm) Schulte SBX-87 snow blowers work with all popular skid steers. A 3pt version is also available for 25-65hp tractors.

Built with the legendary Schulte quality and durability, both models feature a replaceable cutting edge and adjustable, replaceable skid shoes.

The blowers also have an improved larger chute design for greater efficiency, allowing a further throw than previous models.

Various size motors to match skid steer flows.

Hydraulic valve block, primarily used on skid steers with only one valve.

Standard Skid Steer Mounting Plate and electrical harnesses available for various skid steer models.

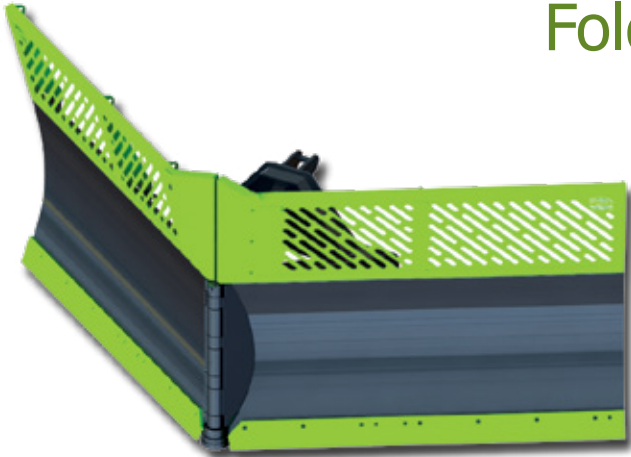
Control kit for models without joystick controls.



Available in skid steer mount and 3 point mount

SV-10 / SV-12 / SV-14 Snow Plow

Folding SV Plow For Your Toughest Road Clearing Jobs



SV Blade pivots 30° front or back on a Heavy Duty 2 3/8" main pin

Utilize your tractor year round, with the SV-10, SV-12, SV-14 Plow, available in 10', 12' and 14' widths.

Mount this blade to the Schulte FM-350, or onto the rear 3pt of your tractor.

Use to clear RM, county or oil lease roads, village and city streets. Use the Scoop Mode to clear intersections quickly and efficiently. Clearing modes include Full Angle Mode, SV Mode & Scoop Mode and anywhere in between



Full range



Straight mode



Full range mode



V mode



Scoop mode



A Schulte snow blower mounted at the rear 3pt of your tractor will provide greater traction to get you through the hardest packed snow.

Get your Schulte Snow Removal Products working together to save time and money!



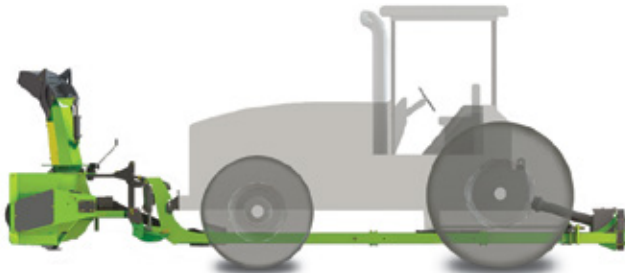
FM-350 / FM-115 Front Mount Frames

Match your Schulte Snow Blower or SV Blade with a Schulte Front Mount Frame

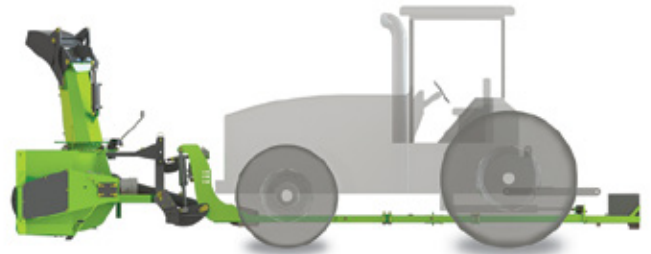
No matter how much snow you need to move, you will appreciate the FM-350 and FM-115. The Front Mount Frames give you the ability to mount your 3pt snow blower or SV Plow on the front of your tractor instead of on the tractor's rear 3pt hitch.

FM-350 Accommodates Tractors from 151" to 211"

FM-115 Accommodates Tractors from 111" to 164"



FM-350 Shown



FM-115 Shown



FM-350 with SV Plow



Specifications

SPECIFICATIONS

Cutting Width
Tractor Horsepower
Cutting Height
Overall Height
Auger Diameter - Bottom
Auger Diameter - Top
Fan Diameter
Fan Type
Fan Shaft Diameter
Auger Drive Chain
Weight
Adjust. Dbl Linked Chute Def
Hyd Chute Rotation
Replaceable Blade
Adjust. Skid Shoes
Hitch Size
PTO Speed
Capacity - Dry / Wet

RDX-117

117" (2.97m)
140-220hp (104-164kw)
45 1/2" (1.15m)
100" (2.54m)
23" (58.4cm)
14" (35.5cm)
38" (96.5cm)
5 paddle
2" (5.1cm)
#80
2750lbs (1247kg)
Standard
Standard
Standard
Standard
Cat II & III 3pt & quick hitch
1000rpm
762tons/hr / 2394tons/hr

SDX-117

117" (2.97m)
140-220hp (104-164kw)
45 1/2" (1.15m)
100" (2.54m)
23" (58.4cm)
14" (35.5cm)
38" (96.5cm)
5 paddle
2" (5.1cm)
#80
2750lbs (1247kg)
Standard
Standard
Standard
Standard
Cat II & III 3pt & quick hitch
1000rpm
762tons/hr / 2394tons/hr

RDX-102

102" (2.6m)
85-140hp (63-104kw)
37" (939mm)
100" (2.54m)
23" (58.4cm)
-
38" (96.5cm)
4 paddle
1 5/8" (41mm)
#80
2050lbs (930kg)
Standard
Standard
Standard
Standard
Cat II & Cat II quick hitch
540rpm / 1000rpm
426tons/hr / 1343tons/hr

SDX-102

102" (2.59m)
85-140hp (63-104kw)
35" (889mm)
96" (2.44m)
23" (58.4cm)
-
30" (762mm)
4 paddle
1 5/8" (41mm)
#80
1675lbs (760kg)
Standard
Standard
Standard
Standard
Cat II & Cat II quick hitch
540rpm / 1000rpm
388tons/hr / 1222tons/hr

SDX-840

84" (2.14m)
55-85hp (41-63kw)
30" (762mm)
78" (1.98m)
18" (457mm)
-
26" (660mm)
4 paddle
1 5/8" (41mm)
#80
1000lbs (373kg)
-
Standard
Standard
Standard
Cat II & Cat II quick hitch
540rpm
258tons/hr / 810tons/hr

SPECIFICATIONS

Cutting Width
Tractor Horsepower
Cutting Height
Overall Height
Auger Diameter
Auger Diameter - Top
Fan Diameter
Fan Type
Fan Shaft Diameter
Auger Drive Chain
Weight (3pt Model)
Weight (Skid Steer Model)
Adjust. Dbl Linked Chute Def
Hyd Chute Rotation
Replaceable Blade
Adjust. Skid Shoes
Hitch Size
PTO Speed
Capacity - Dry / Wet

SBX-87

87.5" (2.2m)
30-55HP (22-41kw)
26" (.66m)
63.5" (1.6m)
16" (40.7cm)
22" (55.9cm)
4 paddle
1 3/8" (3.5cm)
813lbs (369kg)
933lbs (423kg)
Standard
Standard
Standard
Standard
Standard
Standard
Cat 1
540rpm
132tons/hr / 415tons/hr

SBX-75

75.5" (1.9m)
30-55HP (22-41kw)
26" (.66m)
63.5" (1.6m)
16" (40.7cm)
22" (55.9cm)
4 paddle
1 3/8" (3.5cm)
780lbs (354kg)
900lbs (408kg)
Standard
Standard
Standard
Standard
Standard
Standard
Cat 1
540rpm
132tons/hr / 415tons/hr

SPECIFICATIONS

Width
Width
Width
Moldboard height w/cutting blade
Snow deflector shield
Total height
Weight (Approx.)
Weight (Approx.)
Weight (Approx.)
Horsepower recommended
Horsepower recommended
Horsepower recommended
Transport Width
Transport Width
Transport Width

SV PLOWS

SV-10 10' (3.04m)
SV-12 12' (3.66m)
SV-14 14' (4.27m)
38" (.96m)
24" (.61m)
62" (1.57m)
SV-10 2400lbs (1088kg)
SV-12 2550lbs (1156kg)
SV-14 2700lbs (1224kg)
SV-10 65-125hp (48 kw-93kw)
SV-12 100-200hp (74 kw-149kw)
SV-14 150-200hp (112 kw-149kw)
SV-10 8' 8" (2.64m)
SV-12 10' 5" (3.17m)
SV-14 12' 2" (3.71m)

SCHULTE

Schulte Industries Ltd.

PO Box 70, Englefeld, SK Canada S0K 1N0

Ph (306) 287-3715 Fx (306) 287-3355

Email info@schulte.ca Web www.schulte.ca



Sold By:

Schulte is a registered trademark of Alamo Group Inc.

Schulte Industries Ltd. reserves the right to change the design and specifications of its products without notice. Illustrations may include optional equipment and accessories, and may not include all standard equipment.

Printed in Canada

Prepared by NELSON GRAPHIC DESIGN

201811

